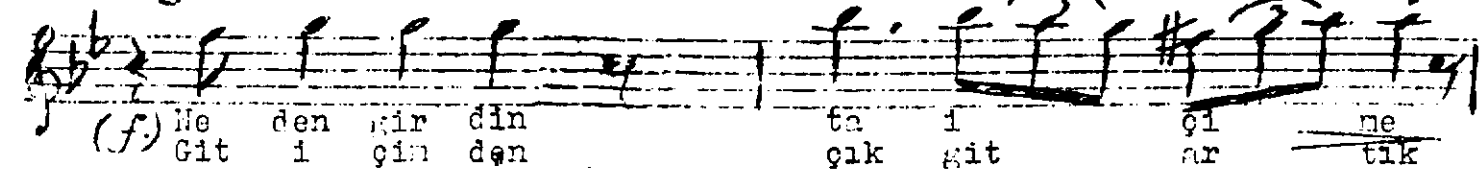
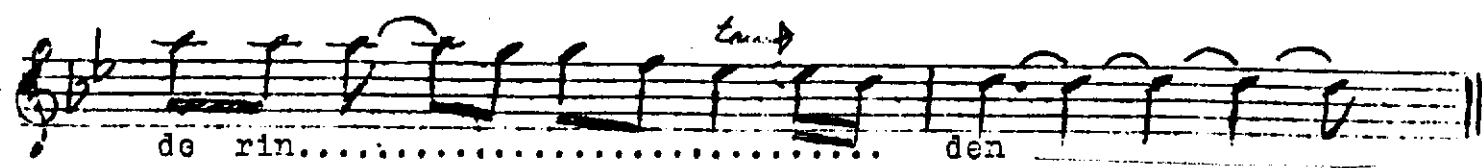
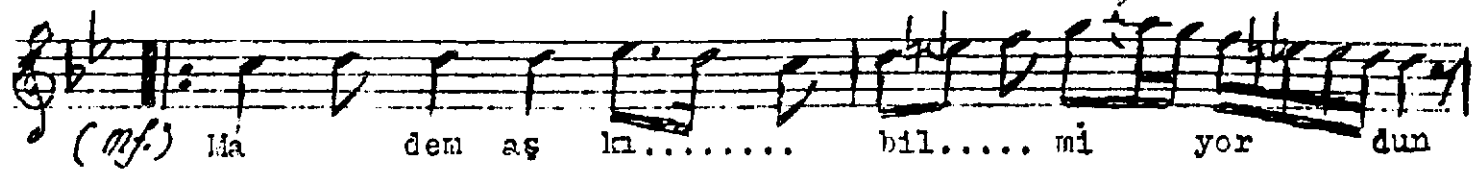
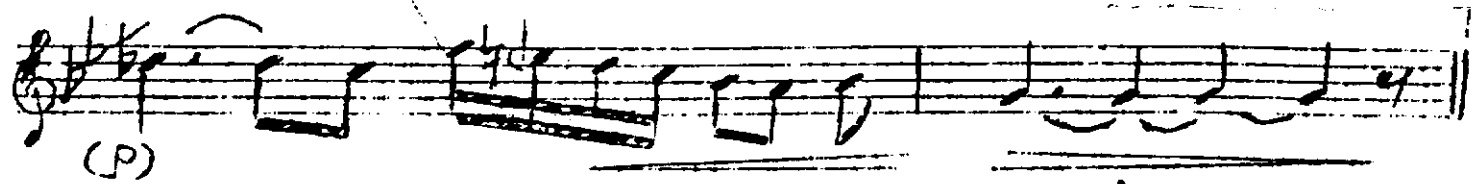
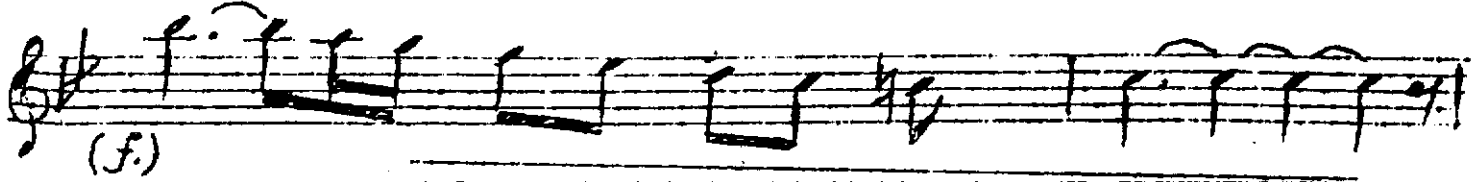
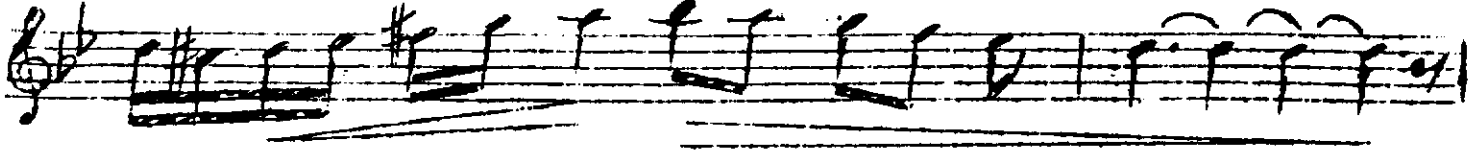
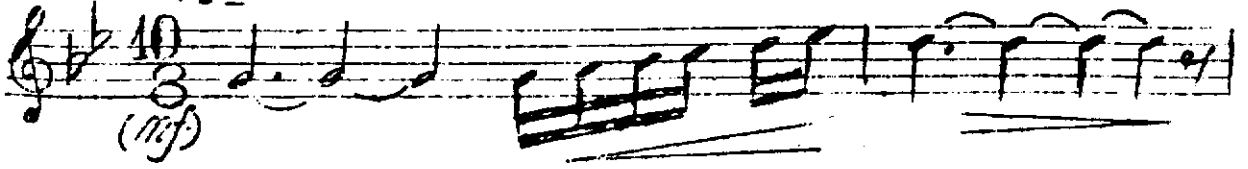


(NEMLİ GÖZLER)

Curcuna  
(Aşır)

Giriş Sazı

(P. 160)



*ağırca-* (Tempo) *(mf)* Yör gün nem li göz le rin.....

den..... (P) yör gün nem.....

*Tempo* *(mf)* göz le rin..... *Tutti* den *Son*

*(ff)* Bık tım u san dım sev mek.....

ten..... *(mf)* se ni böy le.....

..... *Allegro* .....

..... *Andante* .....

*(mf)* Bek le mek..... ten

Madem aşkı bilmiyordun,  
 sevmiycektin derinden.  
 Neden girdin ta içime  
 Yorgun, nemli gözlerinden  
 Baktım usandım sevmekten  
 Seni böyle beklemekten  
 Git içimden, çık git artık  
 Yoreun, nemli sözlerinden...